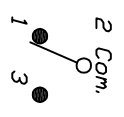


RECOMMENDED PCB LAYOUT

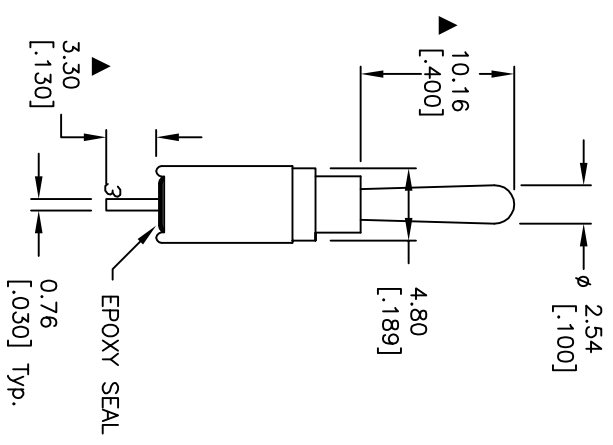
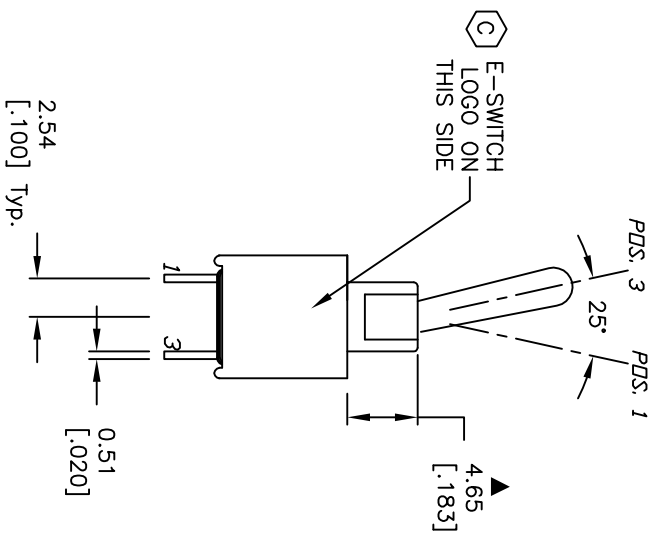
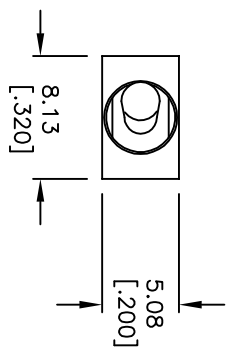


CIRCUIT: SPDT  
CONTACT CONFIGURATION

| SWITCH FUNCTION |        |        |
|-----------------|--------|--------|
| PDS. 1          | PDS. 2 | PDS. 3 |
|                 |        |        |
| DEF             | NONE   | DN     |
| OPEN            | N/A    | 3-1    |

NOTES:

1. ALL DIMENSIONS IN MM [INCH]
2. GENERAL TOLERANCE: X.XX=±0.4  
X.XXX=±0.25
3. TERMINAL NUMBERS FOR REF ONLY
4. RATING: 3A @120V AC or 28VDC;  
1A @250VAC.
5. FIXED TERM. & MOVING CONTACT:  
Copper Alloy W/Silver plate.  
at full load.
6. ELECTRIC LIFE: 50,000 mde-and-break cycles
7. INSULATION RESISTANCE: 1,000 Mega-ohm min.
8. DIELECTRIC STRENGTH: 1,000 V RMS @sea level.
9. OPERATING TEMP.: -30°C to +85°C
10. ▲ DENOTES CRITICAL PARAMETER.
11. 2002/95/EC (ROHS) COMPLIANT



|      |         |                                |         |      |
|------|---------|--------------------------------|---------|------|
| C    | 18643   | SHOW E-LOGO LOCATION CORRECTLY | 9/11/09 | BLR  |
| B    | 17152   | FIXED NOTES, TERMINALS         | 3/30/07 | TN   |
| A    | 13877   | RELEASED FOR PRODUCTION        | 3/26/04 | AR   |
| REV. | ECN No. | DESCRIPTION                    | DATE    | CHKD |

THE INFORMATION CONTAINED IN THIS DOCUMENT IS PROPRIETARY TO E-SWITCH AND IS NOT TO BE COPIED OR TRANSFERRED

|       |         |    |         |     |
|-------|---------|----|---------|-----|
| SCALE | DATE    | DR | DWG     | REV |
| 2:1   | 9/11/09 | TN | T201601 | C   |

TITLE: 200A WMSPT1A1M2QE

E-SWITCH® LAMB INDUSTRIES